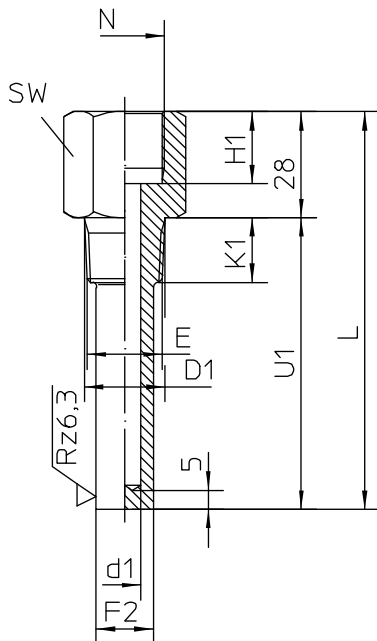


# Thermowell screw-in type per DIN 43772

form 7, solid drilled, female thread

Type series HA8020



## Materials

	material-no.	T max.	P max.*
stainless steel	1.4571	550°C	150 bar
stainless steel	1.4404	550°C	150 bar

\* static conditions of use

Other materials upon request.

The thermowells are available with material certificate per EN 10204-3.1 and are suitable for connection to Zone 0 according to the technical instruction TA\_033.

Upon request a calculation for thermowells can be made (for static or dynamic application) with certificate.

## Length L1 of the temperature detecting element (dial indicating thermometers)

screwed plug, rotating, internal gasket  $L1 = U1 - A$

screwed plug, fixed, external gasket  $L1 = U1 + B$

## DIN-lengths of the thermowells

(pls specify deviating lengths)

L mm	U1 mm
110	82
170	142
260	232
410	382

- Roughness height rating with inspection certificate acc. to EN 10204-3.1

The surface roughness of the wetted parts made of stainless steel are executed according to EHEDG Doc.8 and ASME BPE SF3.

In case of choosing the additional feature HY, we guarantee the following surface roughness values:

Wetted parts	SF3	SF1
Laser welds	$Ra \leq 0.76 \mu m$	$Ra \leq 0.76 \mu m$
Turned parts	$Ra \leq 0.76 \mu m$	$Ra \leq 0.51 \mu m$

Option:

Electropolishing of the wetted parts

## Order details

### Thermowell screw-in type per DIN 43772, form 7, solid drilled, female thread, Type series HA8020

HA8020		Screw-in thermowell per DIN 43772 for thermometers with female thread									
		screw in thread E	instrument screw threads N	bore hole Ø d1	pipe Ø F2	D1	K1	H1	SW	A	B
B11	thermowell form 7	1/2-14 NPT	G 1/2	7	17	-	~20	19	27	2	18
B12				9	17						
B13				11	17						
B20		3/4-14 NPT	G 1/2	7	17	-	~21	19	32	2	18
B21				9	17						
B22				1	19						
A99	pls specify										
G10	material	stainless steel 1.4571 (standard)									
G11		stainless steel 1.4404									
G99		pls specify									

#### additional features (to be indicated in case of need, only):

W1220	combined pressure and strength test (pls specify test pressure)
W1020	material certificate per EN 10204 -3.1
W2502	suitable for connection to Zone 0 acc. to TA_033

Order code (example): HA8020 - B11 - G10 - W1020 - U1=...  
(length U1 pls specify in mm; min. 80, max. 382 mm)